



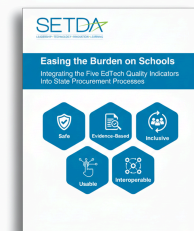
Universal Connectivity Imperative: Sustaining Progress to Close the Digital Access Divide in K–12 Education

The 2025 Universal Connectivity Imperative: Sustaining Progress to Close the Digital Access Divide in K–12 Education builds upon the groundbreaking research and insights of SETDA's previous reports, most notably The Broadband Imperative III: Driving Connectivity, Access and Student Success, published in 2019. This fourth report provides a comprehensive analysis of the current state of internet access in K–12 education, examining the progress made since the last report and the emerging challenges that require urgent attention.

Learn More: <https://setda.info/uci25>

Easing the Burden on Schools: Integrating the Five EdTech Quality Indicators Into State Procurement Processes

This guide offers essential guidance for states and districts in procuring high-quality educational technology products. It outlines five key quality indicators—Safe, Evidence-Based, Inclusive, Usable, and Interoperable—providing a framework for assessing and selecting products that meet educational needs while ensuring compliance. This report also offers recommendations for integrating these indicators into state procurement processes.



Learn More: <https://setda.info/edtechprocurementguide>



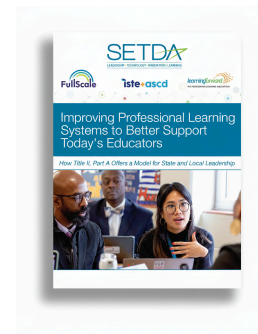
2025 State EdTech Trends Survey and Report

The 2025 State EdTech Trends survey and report track insights on the top edtech priorities as identified in SETDA's survey of state policymakers, including state edtech directors, state superintendents, commissioners of education, and CIOs. This report aims to document how SEAs are adapting to a world where technology is ubiquitous and new and emerging innovations present both unprecedented opportunities and risks. Conducted in collaboration with Whiteboard Advisors, the report includes responses from 47 states.

Learn More: <https://www.setda.org/priorities/state-trends>

Improving Professional Learning Systems to Better Support Today's Educators: How Title II, Part A Offers a Model for State and Local Leadership

This guide draws on national research conducted by SETDA, FullScale, Learning Forward, and ISTE+ASCD to understand how state and local systems are currently using Title II-A, identify where opportunities are being missed, and highlight promising practices that can be scaled. Designed to help state and local leaders shift from compliance-driven spending toward coherence-driven investment, ensuring that every dollar spent—whether from Title II-A or other sources—strengthens educator capacity to deliver equitable, powerful learning for every student.



Learn More: <https://www.setda.org/priorities/professional-learning/title-ii-a/>