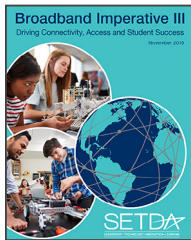
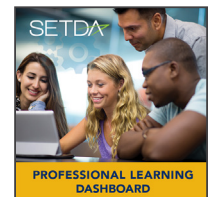


Resources to Advance Learning in the Digital Age



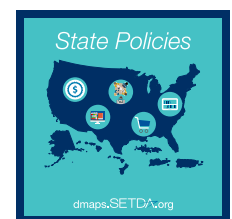
The Broadband Imperative III: Driving Connectivity, Access and Student Success report advocates for equitable, reliable, robust broadband access both on and off campus to prepare all students for life and work. This report builds upon SETDA's earlier work, including its groundbreaking Broadband Imperative series of reports and State Broadband K12 Leadership reports. Exemplars highlight states and districts where robust bandwidth has already positively impacted teaching and learning. <https://www.setda.org/priorities/equity-of-access/broadband-imperative/broadband-imperative-iii/>

The **Professional Learning Practices Dashboard** includes examples of professional learning to support digital learning, personalized learning, quality materials and leadership. The professional learning resources can be sorted by state, goal, delivery method and/or funding source. This dashboard was developed as a resource for state, district and school leaders and is not meant to be all inclusive. SETDA will also work to expand the dashboard. <https://www.setda.org/priorities/professional-learning/>

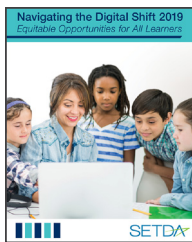


The K12 Instructional Materials Dashboard is an aggregation of state reviewed, full course instructional materials for English/Language Arts and math at the secondary level. Resources can be sorted by state, content area, subject area, grade level, format, publisher and copyright date. This dashboard was developed as a resource for state, district and school leaders from all states as they consider selecting new instructional materials.. <https://qualitycontent.setda.org/dashboard/>

Digital Instructional Materials Acquisition Policies for States (DMAPS). Updated and expanded in February 2019, the DMAPs website is an online database providing state and territory policies and practices related to the acquisition of digital instructional materials in K-12 education. This unique tool offers the opportunity to view details regarding individual states and national trends via an interactive map. The goal of this portal is to provide a clear picture of each state's instructional materials policies and practices to help encourage increased implementation of digital instructional materials. dmaps.setda.org



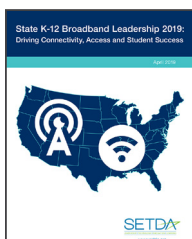
Guide to Quality Instructional Materials. Updated in 2019, state, district and school level leaders can use this guide to launch and maintain vetting processes for the selection of quality instructional materials aligned to standards. Key considerations, questions and helpful hints are included throughout the guide. Additionally, the guide includes best practice examples from states and districts and national, state and local resources to consider when selecting quality instructional materials. <http://qualitycontent.setda.org/>



Navigating the Digital Shift 2019: Equitable Opportunities for All Learners. This publication highlights how state policies and guidance are supporting the transformation to personalized learning through digital instructional materials. The report includes personalized learning approaches and the policies and processes around the selection, curation, procurement, professional learning and funding of digital instructional materials. Evidence of state leadership is highlighted throughout this publication. Specifically, this report: identifies the essential conditions for teaching and learning in a digital environment, shares professional learning opportunities, highlights a variety of state and district implementation models, offers guidance on accessibility policies and practices and provides considerations for next steps.

<https://tinyurl.com/navshift2019>

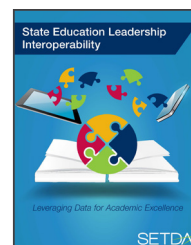
State K12 Instructional Materials Leadership Trends Snapshot. Published in April 2019, the report summarizes current state policies and practices in the selection and implementation of digital instructional materials. This report is based on the 2019 updates to the [Digital Instructional Materials Acquisition Policies for States \(DMAPS\) online portal](#). Since its inception in 2015, DMAPS has been updated annually and expanded to include new topic areas. <https://www.setda.org/priorities/digital-content/snapshots2019/>



State K-12 Broadband Leadership: Driving Connectivity, Access and Student Success. The resource highlights the importance of state leadership and the various ways states strive to support districts and schools to achieve equitable digital learning opportunities for all students both on campus and outside of school. States demonstrate leadership through legislation, initiatives, partnerships, statewide broadband networks, regional networks, and/or statewide purchasing consortia to facilitate reliable, cost-effective internet access for districts. In addition to this report, SETDA published an Online Broadband Map tool to highlight individual state policies and practices and to provide a chance to share additional state examples.

<https://www.setda.org/priorities/equity-of-access/statek12broadbandleadership2019/>

State Education Leadership Interoperability: Leveraging Data for Academic Excellence. Published in May 2018, this resource highlights how state leaders tackle data interoperability with the emergence of data standards for student information, assessment, digital content, and other educational applications. State and private sector leaders identify recommendations and the next steps necessary to continue the conversations within states, among states, and with the private sector to develop cohesive data interoperability practices to achieve student learning goals. <http://www.setda.org/priorities/interoperability/stateleadership/>



Transformative Digital Learning A Guide to Implementation

TDL is a free web-based resource designed to support school and district leaders as they work to ensure that investments in digital learning spark positive results. Updated as of April of 2018, the guide now includes a set of professional learning resources, known as facilitator guides, for states and districts to use to host statewide and/or regional convenings to provide customized support and training. This project also includes a set of stakeholder communication toolkits designed to help stakeholders disseminate information about teaching and learning in the digital age. Topics include: Planning, Professional learning, Operations, Instructional Materials, Equity & Access. <http://digitallearning.setda.org/>