

Resources to Advance Learning in the Digital Age

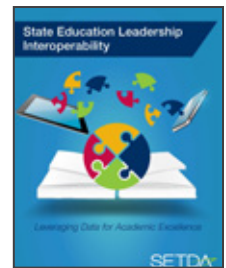


Navigating the Digital Shift 2018: Broadening Student Learning Opportunities.

This publication highlights how state policies and guidance are supporting the transformation to digital learning, specifically the policies and processes around the selection, curation, procurement and funding of digital instructional materials. Evidence of state leadership in these areas—equity of access; accessibility for all students; interoperability; and student data and privacy—is highlighted throughout this publication. <http://www.setda.org/priorities/digital-content/navigating-the-digital-shift2018/>

State Education Leadership Interoperability: Leveraging Data for Academic Excellence.

Published in May 2018, this resource highlights how state leaders tackle data interoperability with the emergence of data standards for student information, assessment, digital content, and other educational applications. State and private sector leaders identify recommendations and the next steps necessary to continue the conversations within states, among states, and with the private sector to develop cohesive data interoperability practices to achieve student learning goals. <http://www.setda.org/priorities/interoperability/stateleadership/>



Transformative Digital Learning TDL **A Guide to Implementation**

TDL is a free web-based resource designed to support school and district leaders as they work to ensure that investments in digital learning spark positive results. Updated as of April of 2018, the guide now includes a set of professional learning resources, known as facilitator guides, for states and districts to use to host statewide and/or regional convenings to provide customized support and training. This project also includes a set of stakeholder communication toolkits designed to help stakeholders disseminate information about teaching and learning in the digital age. Topics include: Planning, Professional learning, Operations, Instructional Materials, Equity & Access. <http://digitallearning.setda.org/>



Digital Instructional Materials Acquisition Policies for States (DMAPS).

Updated and expanded in March 2018, the DMAPs website is an online database providing state and territory policies and practices related to the acquisition of digital instructional materials in K-12 education. This unique tool offers the opportunity to view details regarding individual states and national trends via an interactive map. The goal of this portal is to provide a clear picture of each state's instructional materials policies and practices to help encourage increased implementation of digital instructional materials. dmaps.setda.org

State K12 Procurement Case Studies: Spotlight on Digital Materials Acquisition.

This publication highlights state level procurement case studies that share how states have effectively established and implemented policies for the procurement of high quality instructional materials and devices. These in-depth studies of California, Indiana, Louisiana and Utah provide road maps for other states that are moving forward to implement digital learning materials policies and procedures. <http://www.setda.org/priorities/digital-content/procurement/>

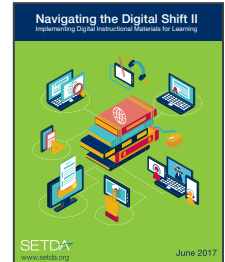




State Wi-Fi Leadership for Fostering Digital Learning Ready K-12 Schools. This publication explores the steps states are taking to address the wireless equity gaps that exist among their schools. Leaders from Illinois, New Mexico, North Carolina, and Utah outline the planning, policy, funding, and management approaches their state agencies or education technology leaders are adopting regarding Wi-Fi, and they share their recommendations for promoting and/or creating equitable access opportunities to high-quality Wi-Fi connectivity. http://www.setda.org/priorities/equity-of-access/state_wi-fi_leadership/

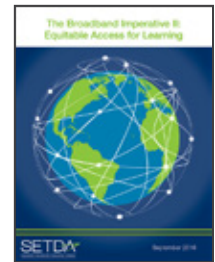
Navigating The Digital Shift II: Implementing Digital Instructional Materials for Learning.

SETDA expands upon the 2015 Navigating the Digital Shift (<https://tinyurl.com/setdashift2015>) report with a focus on living and learning in the digital age. In this second publication, stakeholders will learn about states' guidance and policies around the implementation of digital instructional materials as well as best practices. http://www.setda.org/priorities/digital-content/navigating-the-digital-shiftii_2017/



Guide to Quality Instructional Materials. State, district and school level leaders can use this guide to launch and maintain vetting processes for the selection of quality instructional materials aligned to standards. Key considerations, questions and helpful hints are included throughout the guide. Additionally, the guide includes best practice examples from states and districts and national, state and local resources to consider when selecting quality instructional materials. <http://qualitycontent.setda.org/>

Broadband Imperative II: Equitable Access for All Learners. In this report, SETDA advocates for increasing robust broadband access both in and out of school to best prepare all students for college and careers. SETDA provides the following updated recommendations for policy makers and school leaders: 1. Increase Infrastructure to Support Student-Centered Learning, 2. Design Infrastructure to Meet Capacity Targets, 3. Ensure Equity of Access for All Students Outside of School and 4. Leverage State Resources to Increase Broadband Access. <http://www.setda.org/priorities/equity-of-access/broadband-imperativeii-2016/>



State K-12 Broadband Leadership: Driving Connectivity and Access. SETDA and Common Sense Kids Action partnered on this report that highlights the powerful impact of state leadership in driving critical policy decisions at the national and state level to support broadband networks, bandwidth capacity and home access for low-income families. Educators, policy makers and the private sector will benefit from organized and accessible information regarding states' broadband and Wi-Fi implementation for all 50 states, Guam and the Commonwealth of the Mariana Islands. <http://www.setda.org/priorities/equity-of-access/statek12broadbandleadership/>