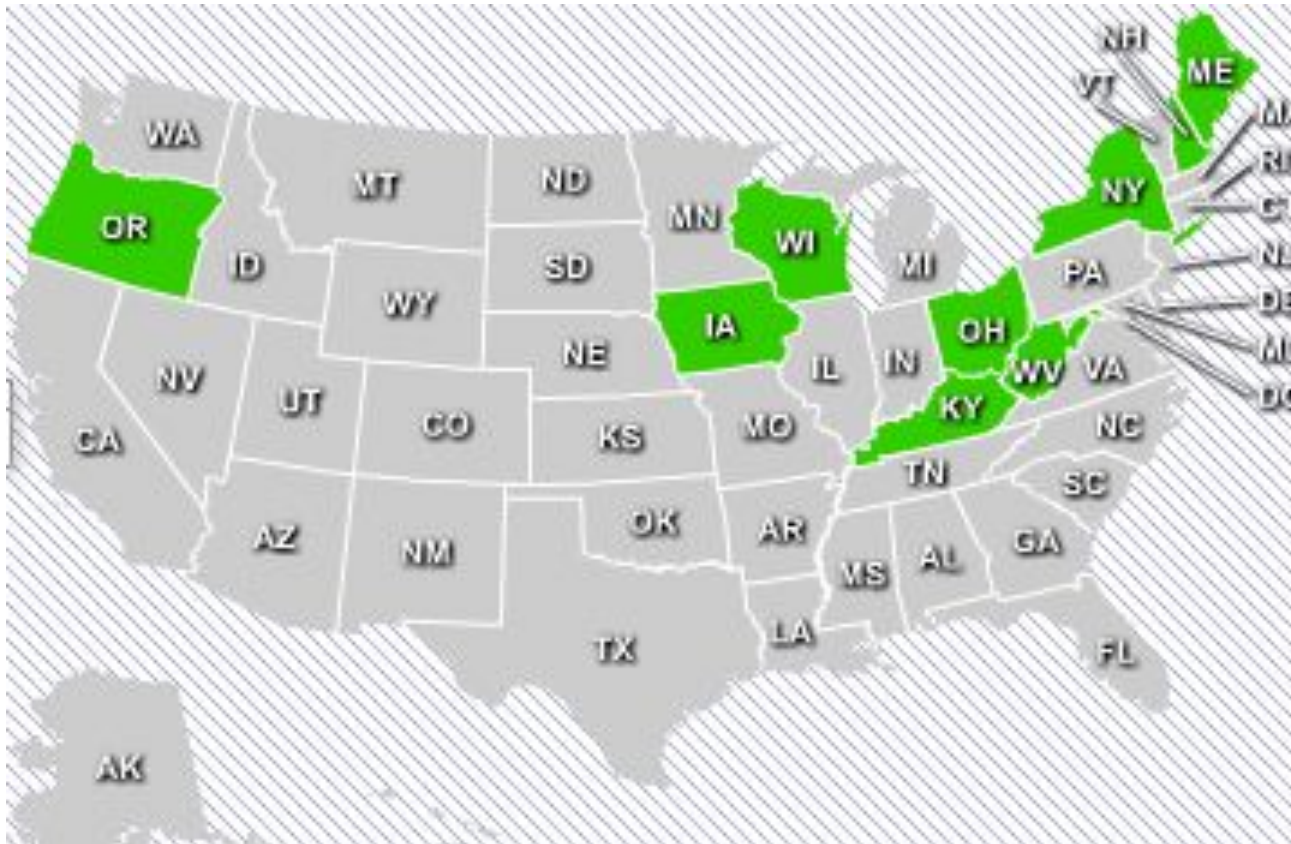


Innovation Lab Network

Linda Pittenger
October 3, 2012 | Washington, DC

Innovation Lab Network (ILN)

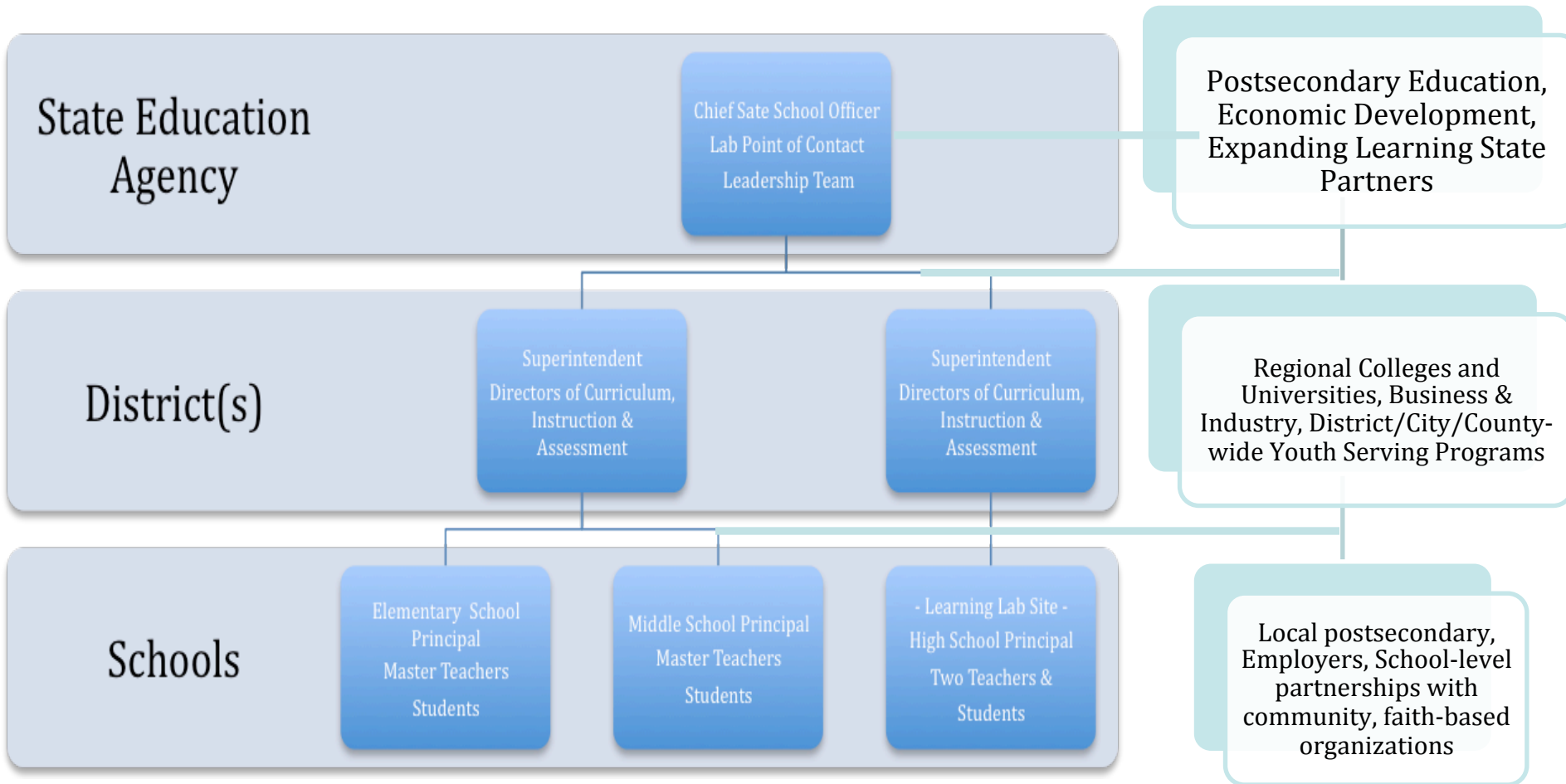


9 ILN States: Iowa, Kentucky, Maine, New Hampshire, New York, Ohio, Oregon, West Virginia, and Wisconsin

Innovation Lab Network

- ⌘ The Innovation Lab Network creates the opportunity and space to realize in practice the ambitious and transformative vision of the chiefs –
 - New designs for public education that empower each student to thrive as a learner, worker and citizen
- ⌘ The Network was formed in 2010 after states were selected to participate based on their readiness at all levels of the system (chief to student) to champion innovative educational practices
- ⌘ The ILN is supported today by the Hewlett Foundation, the Nellie Mae Educational Foundation, the Stupski Foundation, and the C. S. Mott Foundation

The Innovation Lab



ILN Critical Attributes

- ⌘ The Innovation Lab Network is positioned to directly challenge the status quo:
 - ⌘ It is not a grant program
 - ⌘ It is not a model
 - ⌘ Vertical and horizontal network dimensions
 - ⌘ States and communities working together out of mutual interest to find solutions to complex problems through innovations that inform whole system change
 - ⌘ Anchors work using essential design principles - the Six Critical Attributes of next generation learning

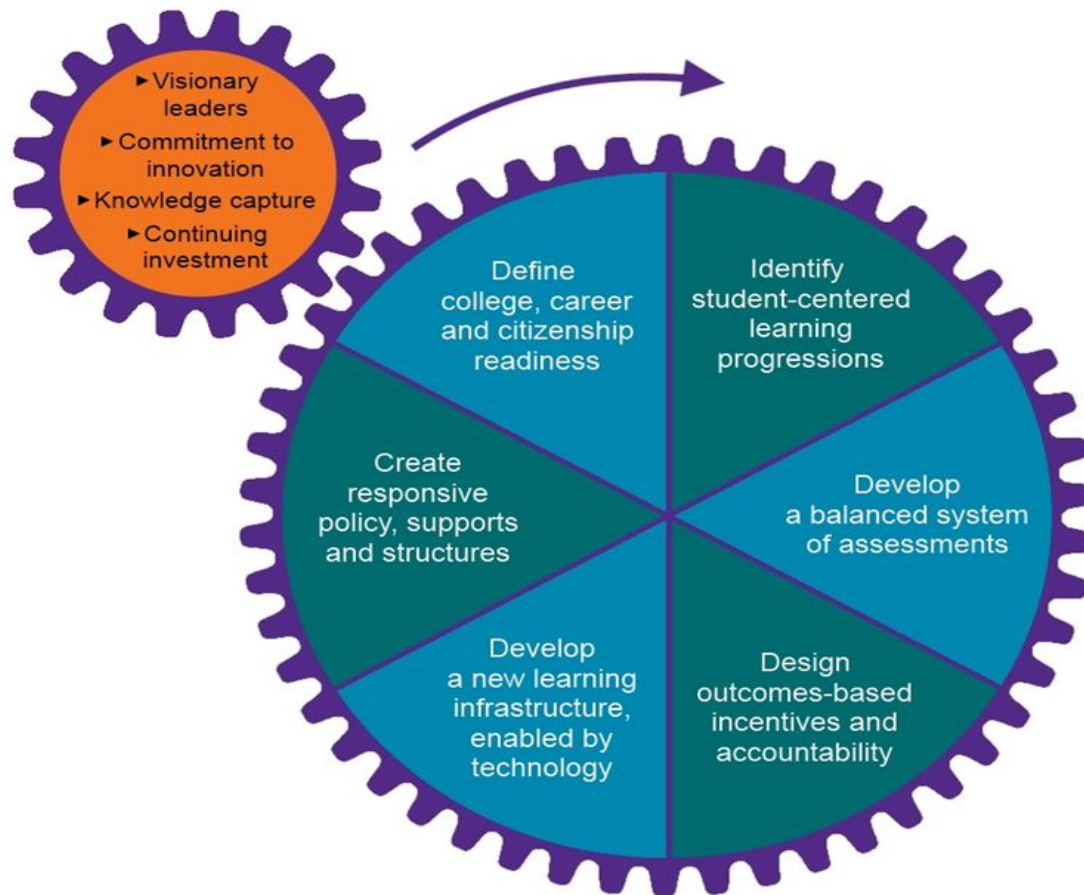
Six Critical Attributes

- ⌘ **World-class knowledge and skills**, which require achievement goals to sufficiently encompass the content knowledge, skills, and dispositions required for success in a globally-oriented world
- ⌘ **Performance-based learning**, which puts students at the center of the learning process by enabling the demonstration of mastery based on high, clear, and commonly-shared expectations
- ⌘ **Personalized learning**, which calls for a data-driven framework to set goals, assess progress, and ensure students receive the academic and developmental supports they need

Six Critical Attributes

- ⌘ **Comprehensive systems of learning supports**, which address social, emotional, physical, and cognitive development along a continuum of services to ensure the success of all students
- ⌘ **Anytime, everywhere opportunities**, which provide constructive learning experiences in all aspects of a child's life, through both the geographic and the Internet-connected community
- ⌘ **Student agency**, which is the deep engagement of students in directing and owning their individual learning and shaping the nature of the education experience among their peers.

ILN Action Agenda



Collective Investigation & Action Across the States

⌘ Develop a shared understanding of what it means to be college, career, citizenship ready:

- Common Core State Standards - essential but not sufficient
- Three dimensions: Knowledge, Skills & Dispositions (deeper learning skills, ICT literacy, creativity and Innovation)
- Master rigorous content knowledge *and* effectively integrate and apply in diverse environments within and across disciplines
- Understanding of content grows through application and context
- Knowledge and skills are not attained in a vacuum but aided by dispositions (persistence, goal setting, self-efficacy)
- Provide continuing, scaffolded experiences to understand, practice and demonstrate critical knowledge and skills
- CCR is the end of a long, formative process of personalized learning; cannot be judged with a single measure

Collective Investigation & Action Across the States

- ⌘ **Test new performance-based methods of assessment that lead to deep understandings and strong retention**
 - What are valid indicators and measures? What evidence of learning will we accept?
 - New ways for students to evidence learning that are more open-ended and complex – and sometimes designed by students
 - Seeking evidence of what individual students actually know and where they are on any learning trajectory as they build toward mastery of a standard – not just whether they have met a standard
 - Important dimension of the broader landscape of issues that states are facing as they figure out how to formulate a robust, valid, and reliable system of assessments that serves multiple purposes

Collective Investigation & Action Across the States

⌘ A new learning infrastructure through testing, refining and scaling tech-enabled innovations

- Equity and Personalized Learning at Scale
- Common Education Data Standards
- Knowledge Base and Talent Cloud - New roles for teachers as designers, producers, applied researchers, market-influencers
- Open Educational Resources
- Blended learning is the natural state
- Enabler of a “new pedagogy” - developing metacognition through gaming, simulations and tech-enhanced assessments
- Shift focus of tech integration from automation and productivity to enhancing learning and scaling practice innovations
 - Next Generation Learning Challenges
 - Shared Learning Collaborative
 - “Consortium Plus”